



LAND TRUST 101

CARRIE KASNICKA – EXECUTIVE DIRECTOR, GUADALUPE-BLANCO RIVER TRUST

WHAT IS A LAND TRUST?

- Land trusts are **non-profit organizations** whose mission is to conserve natural resources
- These organizations assist landowners with their conservation goals
- Vary in size and scope: Local, Regional, National and International Impact



National Snap Shot

- 1600 land trusts
- 1000 LTA members
- 56 Million Acres

www.landtrustalliance.org

2015 NATIONAL LAND TRUST CENSUS AT A GLANCE

 **56 MILLION**

Total acres conserved by state, local and national land trusts as of year-end 2015—an increase of 9 million acres since 2010

 **8,184**
Full-Time and Part-Time Staff

 **15,779**
Board Members


 **207,646**
Other Active Volunteers

 **4.6 MILLION**
Members & Financial Supporters

 **72%**
Percent of land owned by land trusts that allows public access

 **77%**
Percent of total acres owned and under easement held by an accredited land trust

 **6,250,000**
Number of visitors to land trust properties in 2015

 / **5x**
Accredited land trusts added more staff capacity and protected five times as much land as eligible, non-accredited land trusts.

 **\$588 MILLION**
Dedicated funding for stewardship and legal defense

 **\$2.18 BILLION**
Amount in endowments and dedicated funding managed by state, local and national land trusts

Land Trusts' Top Three Conservation Priorities:

1 |  Important natural areas or wildlife habitats

2 |  Water quality, including wetlands

3 |  Working farms or ranchlands

Texas Snap Shot

- 30+
- Annual Conference Feb 27-March 01
- Legislative Efforts
- Lands Inventory
- 1.6 Million Acres

Texas Land Trust Council
TLTC

www.texaslandtrustcouncil.org



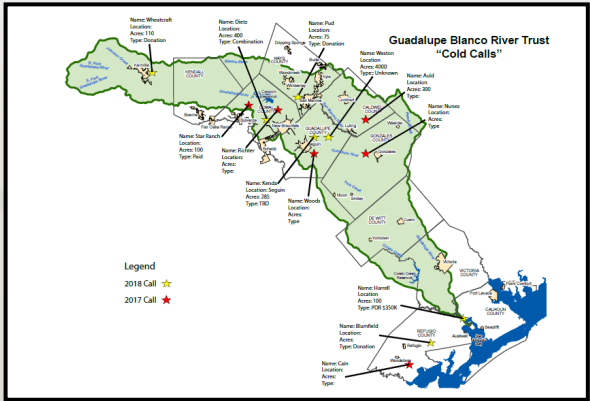
LAND TRUST WORK

- ✔ Private Landowners
- ✔ Land Trust Colleagues
- ✔ State and Federal Agencies
- ✔ Community Stakeholders



STAKEHOLDER EDUCATION

- 🍃 Educational Workshops
- 🍃 Publications
- 🍃 Recreational Activities
- 🍃 Field Inquiries



COMMUNITY ENGAGEMENT & ADVOCACY

- Supporting local partners & environmental events
- Advocating State and Federal levels
- Hosting college internship programs to groom natural resource professionals
- Manage fee-owned properties for low impact public recreation



PRIVATE LANDOWNER SUPPORT

- Share Mission – Meaningful conservation starts with you
- Align with your vision
- Understand your story
- Story teller, advocate, partner



TRANSACTION SUPPORT

- Initial property evaluation and fit
- Guide & Partner
 - Appraisal
 - Baseline Report
 - Survey
 - Conservation Easement Agreement
 - Identifying funding sources and grant participation (require 501c3)
 - Legal reviews
 - Title work and review
 - County recordation and archiving original and all future documents
 - Conduct annual site visit



STEWARDSHIP FEE & SUPPORT

- Annual Site Visit costs
 - Acres, topography, mileage, report generation, photo documentation, logistics, staff time
- Insurance premiums per easement
- Terrafirma Defense Fund
- Supporting continued local and state-wide conservation efforts



ANNUAL MONITORING - SITE VISIT

- Be onsite each year meet with landowners or designated person
- Prepare site visit document overview of the easement agreement
- Photo document conservation values (1000 photos, 1000 miles each year)
- Record fulfillment of building envelopes
- Complete a report
- Violation (resolution minded)
- Maintenance (weather, resources, finance)
- Archive
- Legal Requirement



Carrie Kasnicka, Executive Director

ckasnicka@gbrtrust.org

Cell: 630-567-1717

Office: 830-379-5822

www.gbrtrust.org

Like us on Facebook

Follow us on Twitter @GBRTrust

